



# Curtain Call

June 2009. **Newsletter of the Melville Theatre Company Inc** Vol 19 Iss 12

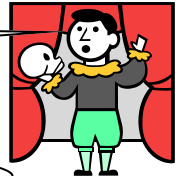
PATRONS Mr Russell Aubrey, Ms Katherine Jackson & Mrs June Barton

ADDRESS MELVILLE THEATRE cnr Stock Rd & Canning Hwy, Palmyra 6156 TELEPHONE 9330 4565

CORRESPONDENCE PO Box 33 Melville WA 6956

WEBSITE <http://www.meltheco.org.au> EMAIL: [melville.theatre.company@gmail.com](mailto:melville.theatre.company@gmail.com)

To be a member of MTC or not to be a member, that is the question.



No it's not, don't be ridiculous! There is no question! Renew, be a member, enjoy all it has to offer!

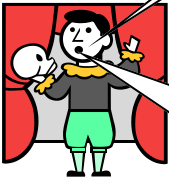


Like?

Like being able to see six fantastic shows a year at concession prices.



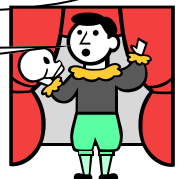
True and *The American Plan* is coming up soon (June 25,26,27,28, July 2,3,4) and I hear it is going to be a great show. Note to self: book on 9330 4565.



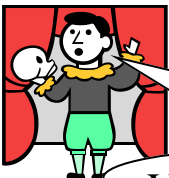
And being able to attend and vote at the AGM, stand for committee, or just have a say.



True and that is coming up too, on July 8th. Note to self: Send in nomination form!



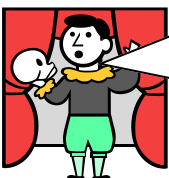
And being able to audition for shows or work backstage or in the bio box.



Very true and there are two auditions coming up, *Winter Warmers* (June 20th) and *Forum* (July 4th). Note to self: contact directors re auditions.

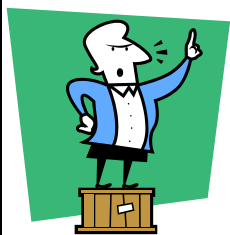
And it is fun and the people are nice and the newsletter is excellent (☺) and they have a great bar!

All true! I will renew right now! I will download a form from the website or call Vanessa on 9354 7651. Note to self: stop having conversations with a papier-mâché prop skull!





Our last two seasons have been great successes. We decided we would do a year of comedy and so far it is working. Our audiences appear to love it. We are now well into rehearsals for our next production "The American Plan" directed by Geoff Leeder. Geoff tells me that although not technically a comedy, it really has some very funny moments. Please come along and support Geoff, his cast and crew and your theatre.



### Stuart's Soapbox!

The AGM will be held on Wednesday, July 8, at the theatre at 7.30pm. Your support is needed to make it a great night. If you have felt the urge to work for your theatre on committee, now is your chance to nominate. Forms are included with this newsletter. All positions on the committee are declared vacant, so this is your chance to contribute. After the formal proceedings, there will be nibbles and drinkies to follow.

I would like to thank all the directors, actors, backstage crew, front of house crew and the committee for their support this year. It has been a pleasure to be President.

At the AGM there will be a motion to change the dates of our financial year. I urge you to accept this change.

See you at the theatre

Stu

### NOTICE OF MOTION

At the AGM this year, the following motion will be put to the members for vote;

**“that the financial and membership year for Melville Theatre Company (Inc) be changed to January 1 – December 31 “**

### Read a play you wish to direct?

The committee are calling for submissions to direct a season in 2010.

Submission forms and further details can be obtained from Val Riches on 9339 3719.

## *The American Plan*

Book now on 9330 4565.

Get a group together to come along and enjoy the latest offering at Melville.

Please put the enclosed flier up at work or in your local library or shopping centre to help publicise this show.

If your address was underlined in green highlighter on this newsletter, then it will be your last unless you renew your membership. If you have misplaced the membership form you can download one from the website <http://www.meltheco.org.au> or ring the membership officer, Vanessa, on 9354 7651 and ask for one to be sent out.



## Winter Warmers Audition Notice

### Melville Theatre Company's One Act Season

(season runs August 7, 8, 9, 13, 14, 15)

**Saturday 20<sup>th</sup> June 2009 – 2pm at the theatre**

**This is an open audition for all three one act plays.**

#### **Queer Street by John Donald Kelly, Directed by Kirstie Francis**

*Queer Street* is set in the living room of a house somewhere in England. Mr Hart and his friend Joe burgle houses for a living. Edith, his daughter has recently got engaged and wants her new fiancé to meet her father but is nervous about the fact that her new fiancé is a policeman. What takes place next is a funny scene where both parties try and keep their wits about them until it ends in a very unexpected twist!

**Mrs Liza Hart** - mid 40 - 50 - Loves her husband, family woman, hearty

**Mr Bill Hart** - 40- 60 - Comical likable character, burglar for a living

**Edith (daughter)** - 18-25 - Shy quiet girl, completely in love with her new fiancée

**Albert Smith (daughter's fiancé)** - 20-25 - Confident, a bit smug, inquisitive

**Joe Smart (Mr Hart's 'business' partner)** - 40-60 - Long time friend of Mr Hart, partner in crime

**A Detective** - 30-60 - Small part towards the end of the play

English accents required – lower class from London, Midland or Liverpool (depending on cast).

For further information please contact Kirstie on 0403 166 404.

#### **Effie's Burning by Valerie Windsor, Directed by Vanessa Jensen**

*Effie's Burning* is a simple yet very powerful play. Effie, who has lived in mental institutions since the age of thirteen, has been admitted to hospital with severe burns. Treating her is Dr Ruth Kovacs, who finds in Effie's extraordinary story of injustice and official callousness the key to her own suppressed anger and power.

**Effie:** 60's, but with an untouched, childlike quality about her. Effie has been burnt and will be in bandages so it is possible to make someone younger up to her age.

**Dr Kovacs:** 30's, slightly harassed looking, unsure of herself, self doubting.

English accents. For further information please contact Vanessa on 0413 079 146

#### **Caught On the Hop by David Foxton, Directed by Felicity May**

*Caught on the Hop* is a French farce with parts for two men and three women. Returning home unexpectedly early from a rendezvous with her lover, Sophie Fontaineau finds that her husband Etienne is absent and immediately suspects the worst. She accidentally spills brandy on the trousers of her porter who of course finds himself trouser less, behind a screen and the chaos begins.

**Clothilde** - 50s - maid of the house who knows exactly what is going on

**Sophie Fontaineau** - 30s - Lady of the house, a bold woman who is totally absorbed in herself

**Etienne Fontaineau** - 30s - Man of the house, a bumbling push over

**The Porter** - mid 40s - Reserved man trying to make the best of a bad situation.

**Esmeralda** - the "other woman" - bright, bubbly and oblivious

No accents needed. For further information please contact Felicity May on 0419 436 598



## *What's on elsewhere*

<u>Club</u>	<u>What</u>	<u>Where</u>	<u>When</u>	<u>Bookings</u>
Garrick	<b>The Unexpected Guest</b>	Garrick Theatre 16 Meadow St, Guildford	May 29, 30,31 June 4,5,6, 11,12,13	9379 9400
Waneroo Rep	<b>Little Shop of Horrors</b>	Limelight Theatre Civic Drive	June 11,12,13 17,18,19,20 24,25,26,27	95718591
Pocket Theatre	<b>June 09—A Night of One Act Plays by Local Playwrights</b>	Crackerjacks North Fremantle Bowling Club Stirling Hwy	June 18,19,20, 25,26,27	9319 3303

### Receive your newsletter by email!

The newsletter is usually about 1Mb in size and arrives in your mailbox the day before the others hit the red post-box. It is a PDF document, easy to open and read and it is in  
**COLOUR!**

If you wish to switch to receiving Curtain Call electronically then please email  
Vanessa  
vandlars@bigpond.net.au

### ARTS RADIO

Centre Stage	Information Radio
Ellenbrook	990AM
88.0 FM	Thurs midday
Wed 11.00 to noon	ImaginArt
Arts Collage	6EBA
Radio Fremantle	95.3 FM
107.9 FM	Fri 9.00 to 10.00am
Thurs 8.30 - 11.00am	

### *Birthday Greetings*

## June

**Tony Huntley 4th**  
**Peter Nettleton 17<sup>th</sup>**  
**Nan Aubrey 18th**  
**Joan Hill 19th**  
**Maureen Barnett 20<sup>th</sup>**  
**Brenda Stanley 20<sup>th</sup>**  
**Dorothy Stratton 21st**  
**Dave Pragnall 22<sup>nd</sup>**  
**Jenny Burns 22<sup>nd</sup>**

**Need to contact the committee?**  
**melville.theatre.company@gmail.com**

#### EXECUTIVE

<b>President</b>	Stuart Riches	0412 232 453
<b>Vice President</b>	Jeff Hansen	9361 9075
<b>Secretary</b>	Felicity May	
<b>Treasurer</b>	Geoff Leeder	9527 1968

#### COMMITTEE

Ian Black	0419 925 468
David Goodchild	9451 5642
Pat Keating	9368 5425
Val Riches	9339 3719

#### ANNUAL SUBSCRIPTION

Adult	\$20.00
Adult Concession	\$15.00
Family	\$30.00
Friend	\$12.00

*Meetings held the first Monday of each month at 7.30pm*

The Melville Theatre Co Inc  
PO Box 33  
MELVILLE WA 6956

Newsletter deadline is the last Monday of the month.

Please contact The Editor  
Mail : 15 Gloucester Court  
Willetton, WA, 6155  
Phone : 9354 7651  
Email : vandlars@bigpond.net.au

All contributions are most welcome

#### ARE YOU MOVING?

Please send your new details to  
PO Box 33  
Melville WA 6956