

# Curtain Call

Oct. 2008

Newsletter of the Melville Theatre Company Inc

Vol 19 Iss 4

PATRONS Mr Russell Aubrey, Ms Katherine Jackson & Mrs June Barton

ADDRESS MELVILLE THEATRE cnr Stock Rd & Canning Hwy, Palmyra 6156 TELEPHONE 9330 4565

CORRESPONDENCE PO Box 33 Melville WA 6956

WEBSITE <http://www.meltheco.org.au>

You are invited to come along (and bring a friend) to a

Melville Theatre Fundraising

## *Silver Swan Jewellery Party*

At the theatre (Roy Edinger Hall, Corner Stock Road and Canning Highway)  
on

**Saturday November 1st at 3pm.**

Entry \$2. Raffle and door prizes donated by Silver Swan.  
All proceeds go towards future MTC productions.

*Silver Swan Jewellery is the leading jewellery party plan company in Australia.*



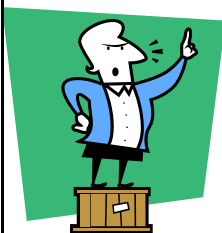
*Specialising in 9ct gold and sterling silver jewellery, they pride themselves on being Australian owned and offering their own uniquely Australian designed and manufactured range.*

As well as socialising with your Melville Theatre friends and supporting the theatre, this is a perfect opportunity to start your Christmas shopping.  
Delivery is guaranteed before Christmas.

Please RSVP to Val Riches 9339 3719 or Jodie Hansen 9361 9075  
by Wednesday 28<sup>th</sup> October.



**CELEBRATING 25 YEARS**  
in 2008



## Stuart's Soapbox!

As our president is currently enjoying the warmth of the great north west of our state, it has fallen to me to scribble a few words from the desk of the vice-president.

*Suddenly At Home* is in its final week, and enjoying good houses, with very positive feedback from audiences. Congratulations to Brenda and my fellow cast members. This weekend is your last chance to see this whodunit from the pen of Francis Durbridge.

Our final season for the year is *A Chorus Line*, from the directorial team who gave us *Blood Brothers* last year – Lars Jensen, Rachel Leonhardt, and welcoming Tim How as our musical director. Lars and his team have been rehearsing at another venue, and will no doubt be keen to get into the theatre after bump-out on Sunday. Make sure you book early for *A Chorus Line*, as we expect to fill seats quickly. If you turn up without booking, you may be disappointed!

Next years offerings are printed elsewhere in the newsletter, having been finalised at this week's committee meeting.

I will be directing our first season - *Doctor In The House*, by Ted Willis. Auditions will be held on November 15<sup>th</sup> at the theatre, at 2pm. I am also looking for stage crew and props, so if you are interested in being part of this fun show, my phone number is on the back page of the newsletter.

Jeff Hansen

It is with sadness that I announce the passing of Denny KERMANI, lovingly referred to as DK, on Sunday September 28th, 2008.

DK was a great friend of the theatre and joined MTC many years ago where his talents as a Tech were put to good use. His knowledge of all things technical were a Godsend. Denny assisted in directing with *Sinbad the Sailor* as well as directing a very funny one act play which won an award at the Drama Festival.

DK will be sorely missed by all those that knew the gentle giant. I know of no one who could say a bad word about this man who touched the hearts of so many people.

For me, I have lost a friend, a confidante and someone with a wealth of theatrical knowledge, but for many others, we have lost DK; a lovely guy and a great mate. I had a red wine for you my friend..., but the show will go on regardless.

Craig Menner

## Dramafest 2008

On the long weekend many current and past Melville Theatre members joined in the wonderful celebration of community theatre that is the ITA's Dramafest, this year hosted beautifully by the Old Mill Theatre. Some were on stage, many were in the audience, some in the kitchen making soup!

Congratulations to all who performed or participated in this year's Dramafest.

Particular congratulations to Jayma Knudson who added to last year's Finley Award for Best Supporting Actress in *Pride and Prejudice*, by taking out the joint Best Actress award for her role in Garrick's *One Night Stand Off*.



### Need to Dress-Up?

MTC Wardrobe hires privately to individuals for a nominal fee & to community theatres free of charge.



## 2009 Seasons

- 1: ***Doctor in the House***  
By Ted Willis                      Directed by Jeff Hansen              Comedy
2. ***Absent Friends***  
By Alan Ayckbourn              Directed by Sue Haywood              Comedy
3. ***The American Plan***  
By Richard Greenberg              Directed by Geoff Leeder              Drama
4. ***Winter Warmers***  
Our annual One Act Season      Directors to be decided in 2009
5. ***A Funny Thing Happened on the Way to the Forum***  
By Stephen Sondheim              Directed by Lars Jensen              Musical
6. ***The Farndale Avenue Housing Estate Townswomen's Guild Dramatic Society Production of "A Christmas Carol"***  
By David McGillivray &      Directed by Jodie Hansen              Comedy  
Walter Zerlin Jr.

## A CHORUS LINE

### Cast

<i>Cassie</i>	Sinead O'Callaghan
<i>Kristine</i>	Tarryn Bullock
<i>Sheila</i>	Julia Hern
<i>Maggie</i>	Tor Hartley
<i>Connie</i>	Sarah Lim
<i>Val</i>	Rachel Leonhardt
<i>Diane</i>	Katie MacCulsh
<i>Judy</i>	Anita Safich
<i>Bebe</i>	Christina Harmsen
<i>Larry</i>	Zoe Jay
<i>Mike</i>	TBC
<i>Rosie</i>	Sarah Chedzey
<i>Zach</i>	Craig Menner
<i>Al</i>	Jason Arrow
<i>Paul</i>	Manuao Teatonga
<i>Bobby</i>	Gareth Walsh
<i>Don</i>	TBC
<i>Mark</i>	Chris Dalton
<i>Greg</i>	TBC
<i>Chorus</i>	Emaly Black Nicquel Barkla Nicola Lord

This show is sure to be popular so  
book now!

**Bookings: 9330 4565**

Tickets: \$20 full, \$15 conc.  
Nov 28, 29—8pm    Nov 30 2pm  
Dec 4,5,6 11,12,13—8pm

As you can see a few of the roles are still being finalised, although the show is already into rehearsal.

If you are interested in possibly filling one of those TBC roles please contact Lars Jensen on 0437 484 569 or by email [vandlars@bigpond.net.au](mailto:vandlars@bigpond.net.au).

*What's on elsewhere . . .*

<u>Club</u>	<u>What</u>	<u>Where</u>	<u>When</u>	<u>Bookings</u>
Waneroo Rep	<b>The Importance of Being Earnest</b>	Limelight Theatre Civic Drive, Waneroo	September — 25,26,27 October— 2,3,4 9,10,11	9571 8591
Garrick	<b>How About That</b>	16 Meadow St Guildford	October—3,4,5 8,9,10,11 15,16,17,18	9379 9400
Grads	<b>A Laughing Matter</b>	Dolphin Theatre UWA, Nedlands	October—24,25 29,30,31 November —1, 5, 6, 7, 8	94841133 BOCS (fees apply)
Old Mill Theatre	<b>Gaslight</b>	Old Mill Theatre Mends St, South Perth	October—10, 11, 12, 16, 17, 18, 22, 23, 24, 25	9367 8719



**Prefer to receive your newsletter by email as a PDF document?**

If you would like to receive yours electronically please email Vanessa asking to be on the list at vandlars@bigpond.net.au

If you thought you had ticked that box on the membership form but received this by post please email Vanessa as it probably means there was a problem with our reading your email address.

**ARTS RADIO**

Centre Stage	Information Radio
Ellenbrook	990AM
88.0 FM	Thurs midday
Wed 11.00 to noon	ImaginArt
Arts Collage	6EBA
Radio Fremantle	95.3 FM
107.9 FM	Fri 9.00 to 10.00am
Thurs 8.30 - 11.00am	

*Birthday Greetings**October*

Di Ryman	2 <sup>nd</sup>
Linda Read	3 <sup>rd</sup>
Robert Stevenson	8 <sup>th</sup>
Michael Tassell	11 <sup>th</sup>
David Goodchild	15 <sup>th</sup>
Judy Pinnock	17 <sup>th</sup>
Stuart Riches	17 <sup>th</sup>
Grace Hitchin	25 <sup>th</sup>

**EXECUTIVE**

<b>President</b>	Stuart Riches	0412 232 453
<b>Vice President</b>	Jeff Hansen	9361 9075
<b>Secretary</b>	Jodie Hansen	9361 9075
<b>Treasurer</b>	Geoff Leeder	9527 1968

**COMMITTEE**

Ian Black	0419 925 468
David Goodchild	9451 5642
Pat Keating	9368 5425
Val Riches	9339 3719

**ANNUAL SUBSCRIPTION**

Adult	\$20.00
Adult Concession	\$15.00
Family	\$30.00
Friend	\$12.00

*Meetings held the first Monday of each month at 7.30pm*

The Melville Theatre Co Inc  
PO Box 33  
MELVILLE WA 6956

Newsletter deadline is the last Wednesday of the month.

Please contact The Editor  
Mail : 15 Gloucester Court  
Willetton, WA, 6155  
Phone : 9354 7651  
Email : vandlars@bigpond.net.au

All contributions are most welcome

**ARE YOU MOVING?**

Please send your new details to  
PO Box 33  
Melville WA 6956